



# 2026 Peanut Weed Control Update

Eric P. Prostko  
Extension Weed Specialist  
Dept. Crop & Soil Sciences

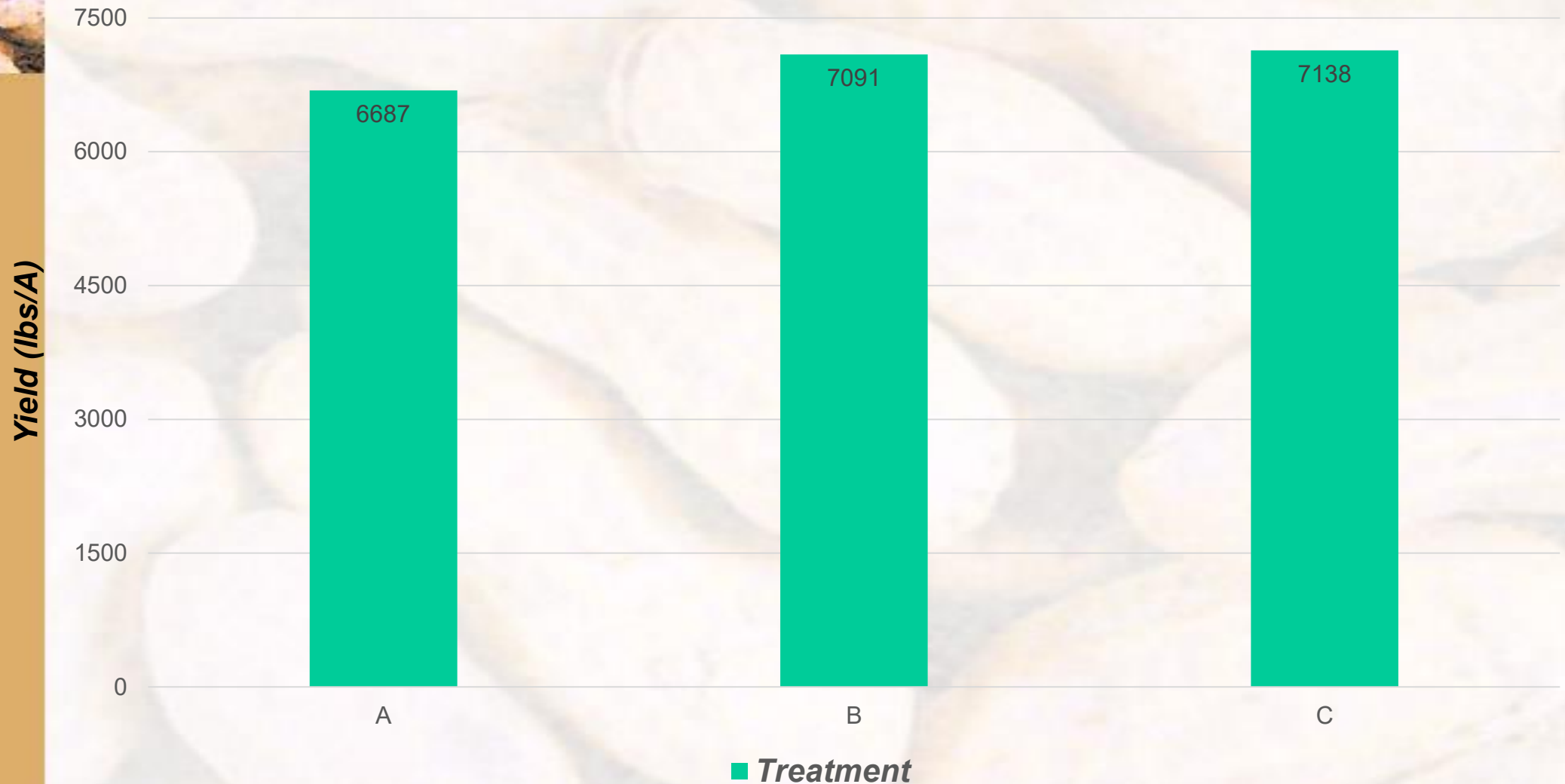


UNIVERSITY OF  
**GEORGIA**

College of Agricultural &  
Environmental Sciences

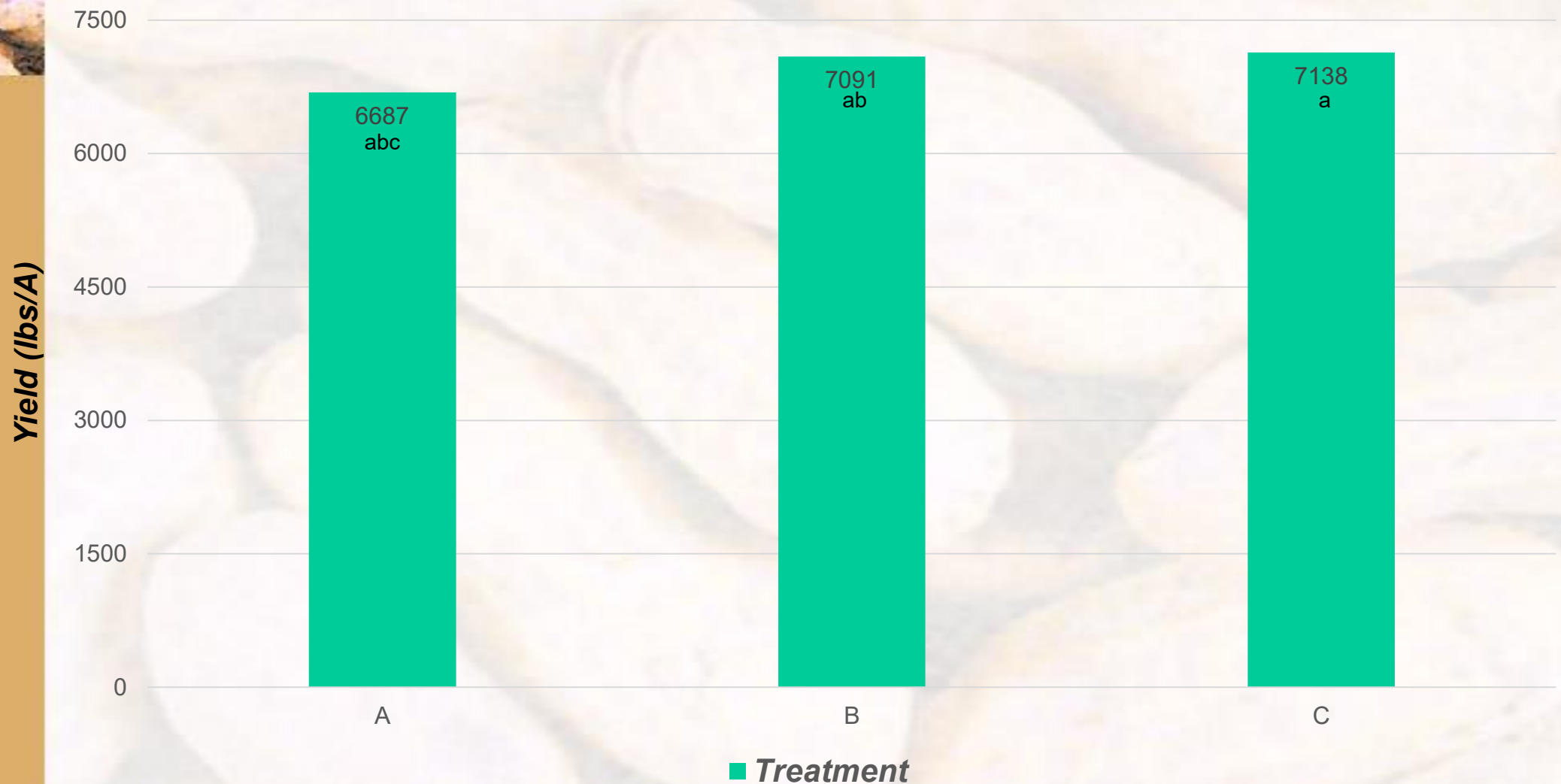


# Peanut (GA-06G) Yield As Influenced by Treatment





# Peanut (GA-06G) Yield As Influenced by Treatment



LSD ( $P=0.10$ ) = 1101  
CV = 24.1





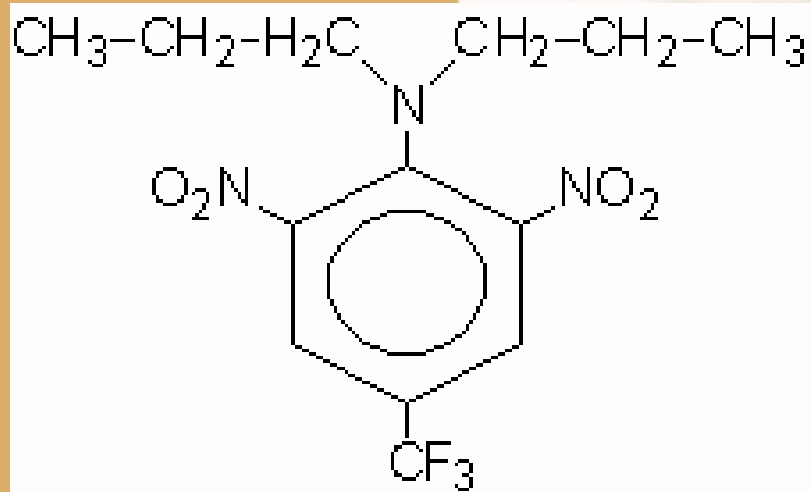
This Ain't Starting Clean!!!



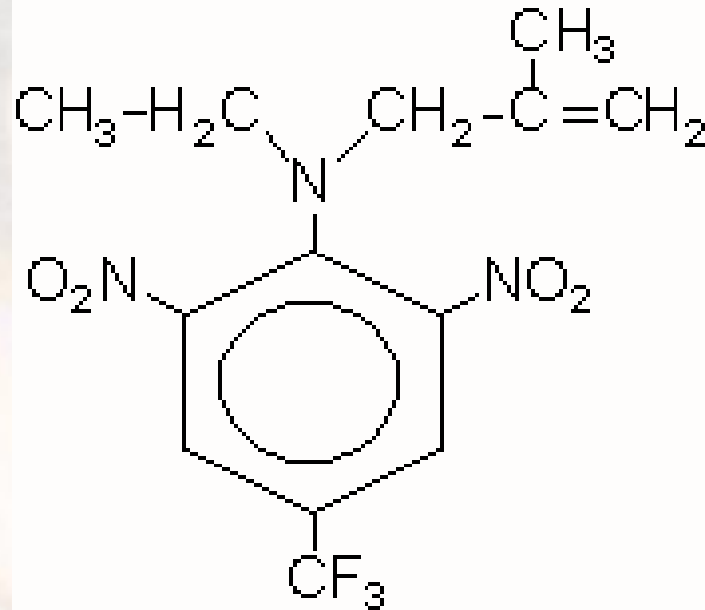


# Treflan vs. Sonalan vs. Prowl

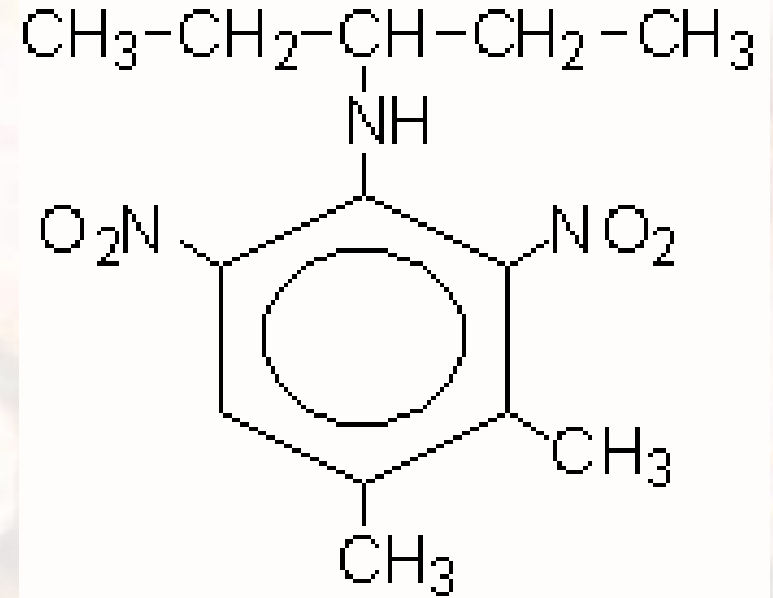
Dinitroaniline Herbicide Family, HRAC/WSSA Group 3  
Inhibitors of microtubule assembly



Treflan  
(trifluralin)



Sonalan  
(ethalfluralin)



Prowl  
(Pendimethalin)

**\*\*Treflan is NOT labeled for use on peanuts in the SE. Only NM, OK and TX!!**



# Prowl vs. Sonalan vs. Treflan\*\* - 2025

(0.5" irrigation-24 HAT)



NTC



**Prowl H<sub>2</sub>O 3.8SC @ 32 oz/A**  
Valor EZ 4SC @ 3 oz/A  
Strongarm 84WG @ 0.225 oz/A  
(PRE)



**Sonalan HFP 4EC @ 32 oz/A**  
Valor EZ 4SC @ 3 oz/A  
Strongarm 84WG @ 0.225 oz/A  
(PRE)



**Treflan 4EC @ 32 oz/A**  
Valor EZ 4SC @ 3 oz/A  
Strongarm 84WG @ 0.225 oz/A  
(PRE)

**\*\*Treflan is NOT labeled for use on peanuts in the SE. Only NM, OK and TX!!**





# Prowl vs. Sonalan - 2025

(0.5" irrigation-24 HAT)



NTC

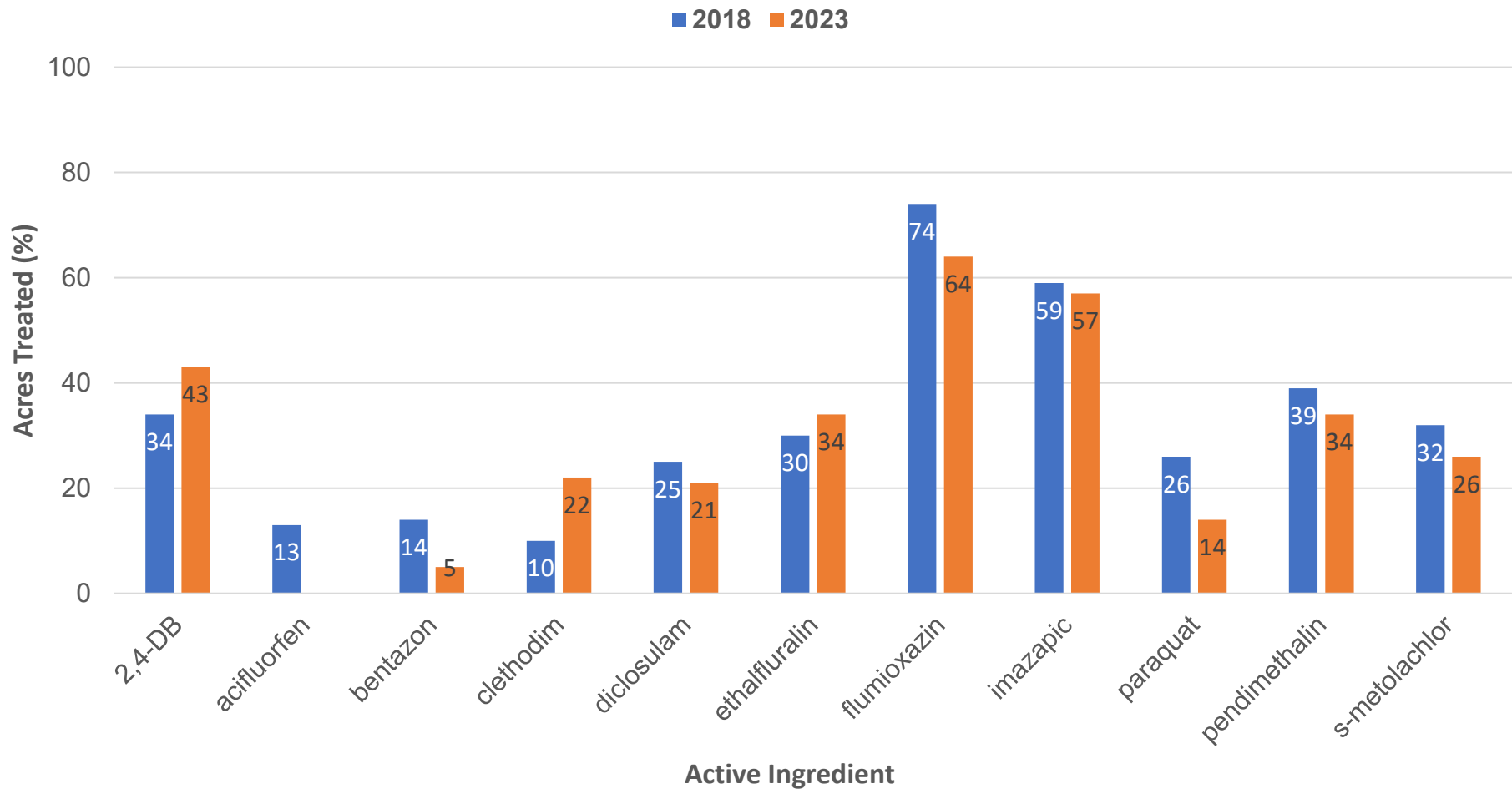


**Prowl H<sub>2</sub>O 3.8SC @ 32 oz/A**  
Valor EZ 4SC @ 3 oz/A  
Strongarm 84WG @ 0.225 oz/A  
(PRE)



**Sonalan HFP 4EC @ 32 oz/A**  
Valor EZ 4SC @ 3 oz/A  
Strongarm 84WG @ 0.225 oz/A  
(PRE)

# Herbicide Use in Georgia Peanuts – 2018 and 2023



Sources: USDA/NASS: 2018 Agrichemical Use Survey-Peanut, May 2019, No. 2019-2; 2023 Agrichemical Use Survey-Peanut, May 2024, No. 2024-3.





# Pendimethalin Formulations - 2025



NTC



**Prowl H<sub>2</sub>O 3.8SC @ 32 oz/A**  
Valor EZ 4SC @ 3 oz/A  
Strongarm 84WG @ 0.225 oz/A  
(PRE)



**Pendalin H<sub>2</sub>O 3.8SC @ 32 oz/A**  
Valor EZ 4SC @ 3 oz/A  
Strongarm 84WG @ 0.225 oz/A  
(PRE)



**Satellite Hydrocap 3.8SC @ 32 oz/A**  
Valor EZ 4SC @ 3 oz/A  
Strongarm 84WG @ 0.225 oz/A  
(PRE)



# Peanut Weed Control - 2025

## “Timely” Program



NTC



Sonalan 3EC @ 32 oz/A  
Valor EZ 4SC @ 3 oz/A  
Strongarm 84WG @ 0.225 oz/A  
PRE  
Cadre 2AS @ 4 oz/A  
Cobra 2EC @ 12.5 oz/A  
Butyrac 200 2SL @ 16 oz/A  
Dual Magnum 7.62EC @ 16 oz/A  
POST (29 DAP)  
**\$45.62/A**

PE-10-25  
July 10  
72 DAP





# Did not get a PRE out ??? No worries!

*Estimated total herbicide cost = \$43.38/A*



Gramoxone 3SL @ 8 oz/A  
Ultra Blazer 2SL @ 16 oz/A  
Basagran 5SL @ 6.4 oz/A  
Enversa 3ME @ 48 oz/A  
Induce @ 0.25 v/v  
**EPOST (15 DAP)**  
Cadre 2AS @ 4 oz/A  
Cobra 2EC @ 12.5 oz/A  
Butyrac 200 2SL @ 16 oz/A  
Enversa 3ME @ 48 oz/A  
Induce @ 0.25% v/v  
**POST (29 DAP)**

PE-10-25  
June 23  
55 DAP





# Brake (fluridone)?

SePRO Ag  
Specimen Label

Brake<sup>®</sup>

FLURIDONE	GROUP	12	HERBICIDE
-----------	-------	----	-----------

Preemergence herbicide for use in cotton, peanut and rice to control a range of annual grass and small seeded broadleaf weeds including pigweed.

**Active Ingredient**  
Fluridone:  
1-methyl-3-phenyl-5-[3-(trifluoromethyl)phenyl]-4(1*H*)-pyridinone.....13.76%

**Other Ingredients** .....86.24%

**TOTAL** .....100.00%

Equivalent to 1.2 pounds fluridone per gallon.

**KEEP OUT OF REACH OF CHILDREN**  
**DANGER / PELIGRO**

Si usted no entiende la etiqueta, busque a alguien para que se la explique a usted en detalle. (If you do not understand the label, find someone to explain it to you in detail).

FIRST AID	
<b>If in eyes</b>	<ul style="list-style-type: none"><li>• Hold eye open and rinse slowly and gently with water for 15 to 20 minutes.</li><li>• Remove contact lenses, if present, after the first 5 minutes, then continue rinsing eye.</li><li>• Call a poison control center or doctor for treatment advice.</li></ul>
<b>If swallowed</b>	<ul style="list-style-type: none"><li>• Call a poison control center or doctor immediately for treatment advice.</li><li>• Have person sip a glass of water if able to swallow.</li><li>• Do not induce vomiting unless told to do so by a poison control center or doctor.</li><li>• Do not give anything by mouth to an unconscious person.</li></ul>
<b>If inhaled</b>	<ul style="list-style-type: none"><li>• Move person to fresh air.</li><li>• If person is not breathing, call 911 or an ambulance, then give artificial respiration, preferably mouth-to-mouth, if possible.</li><li>• Call a poison control center or doctor for further treatment advice</li></ul>

**HOTLINE NUMBER**

Have the product container or label with you when calling a poison control center at 1-800-222-1222 or doctor, or going for treatment. In case of emergency endangering health or the environment involving this product, call **INFOTRAC** at **1-800-535-5053**.

**NOTE TO PHYSICIAN:** Probable mucosal damage may contraindicate the use of gastric lavage.

## Gowan to Lead U.S. Marketing, Sales, and Development of Brake<sup>®</sup> Herbicide, Brake<sup>®</sup> On! Herbicide, and Bio-Tam<sup>®</sup> Biofungicide

11 November 2025

YUMA, Arizona, and CARMEL, Indiana, November 11, 2025 – SePRO Corporation and Gowan Company today announced a strategic alliance poised to strengthen innovation, reach, and value in the U.S. agriculture market.

Under the agreement, Gowan will assume U.S. marketing, sales, and further development responsibilities for Brake<sup>®</sup> Herbicide, Brake<sup>®</sup> On! Herbicide and Bio-Tam<sup>®</sup> Biofungicide, all recognized for their performance in high-value crop protection and resistance management. While these products are currently marketed only in the United States, Gowan will evaluate opportunities to introduce them into other regions in the future.



2025 Brake Price = \$165/gal (12 oz/A = \$15.47/A)





# Peanut Weed Control – 2025

## Georgia 4-WAY? (\$51.94/A)



NTC



Prowl H<sub>2</sub>O 3.8SC @ 32 oz/A  
**PPI**  
Brake 1.2SC @ 8 oz/A  
Valor EZ 4SC @ 1.5 oz/A  
Strongarm 84WG @ 0.225 oz/A  
**PRE**  
Cadre 2AS @ 4 oz/A  
Cobra 2EC @ 12.5 oz/A  
Butyrac 200 2SL @ 16 oz/A  
Dual Magnum 7.62EC @ 16 oz/A  
**POST (42 DAP)**



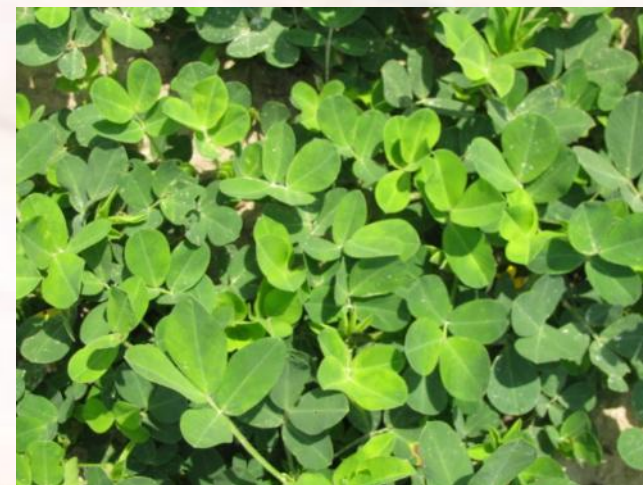
Prowl H<sub>2</sub>O 3.8SC @ 32 oz/A  
Brake 1.2SC @ 8 oz/A  
Valor EZ 4SC @ 1.5 oz/A  
Strongarm 84WG @ 0.225 oz/A  
**PRE**  
Cadre 2AS @ 4 oz/A  
Cobra 2EC @ 12.5 oz/A  
Butyrac 200 2SL @ 16 oz/A  
Dual Magnum 7.62EC @ 16 oz/A  
**POST (42 DAP)**

PE-07-25  
July 9  
69 DAP





# Cadre "Yellow Flash" – 3 DAT







# Strongarm “Yellow” Flash





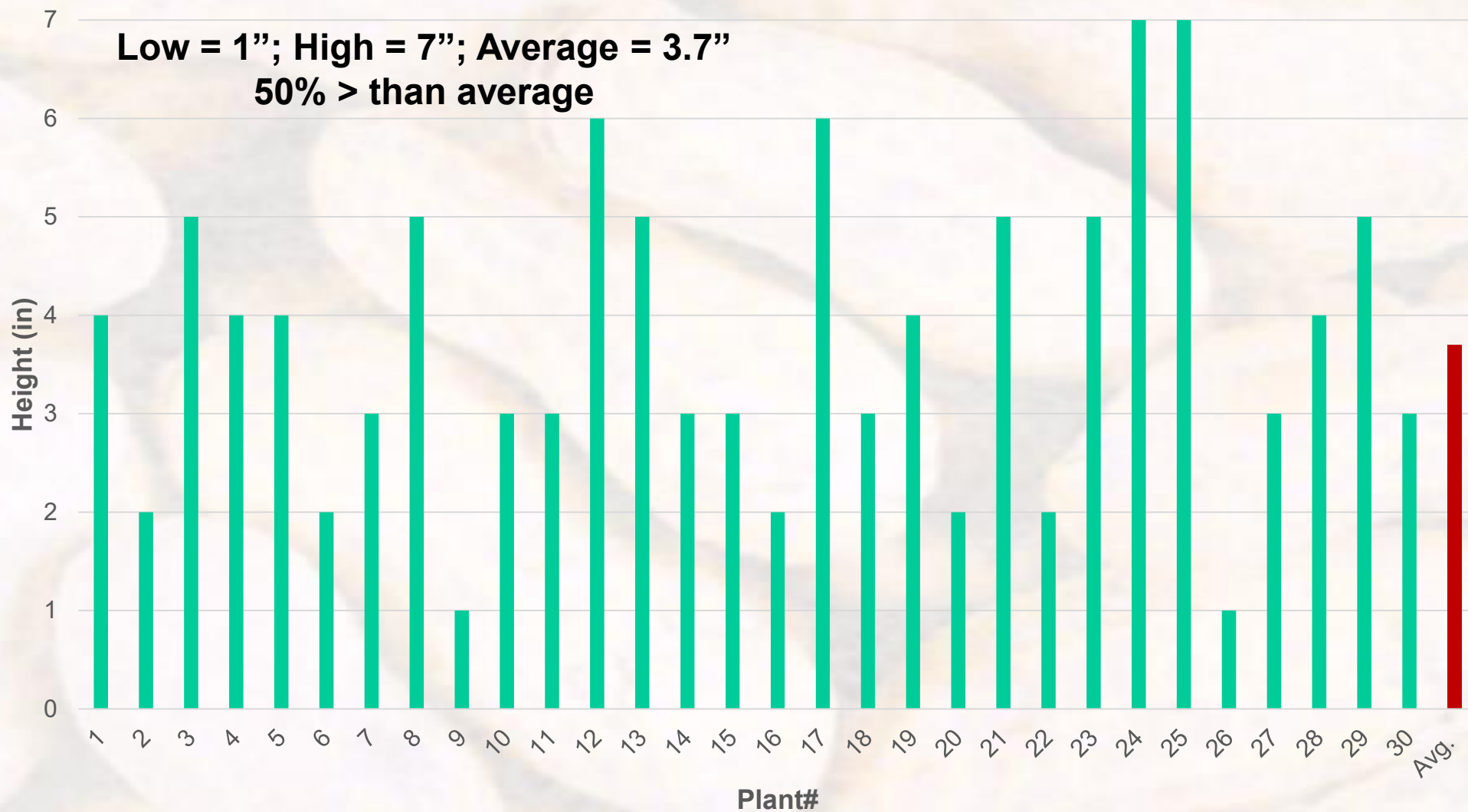
Are these Palmer amaranth plants small?







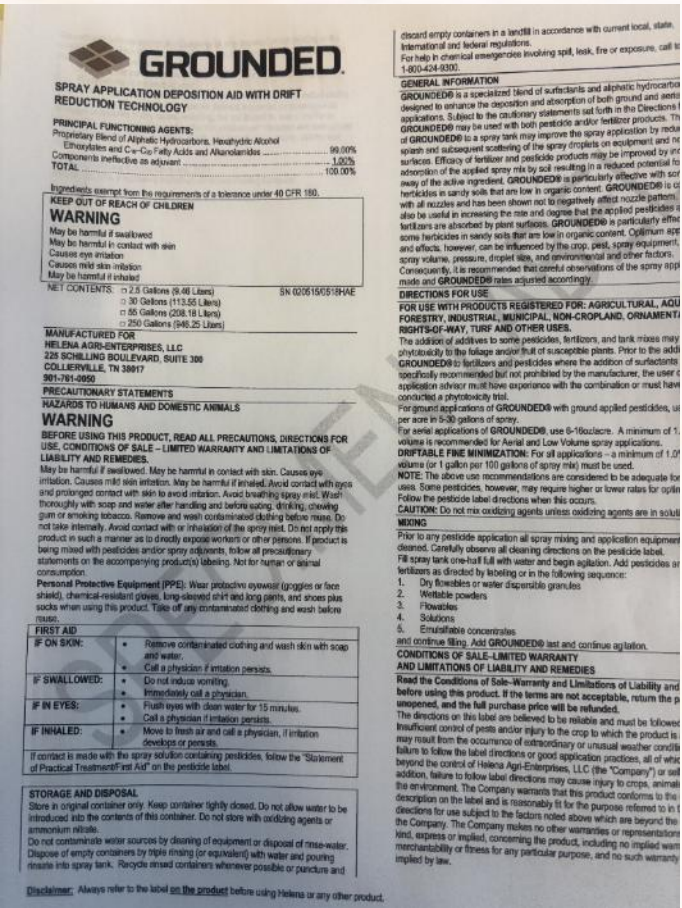
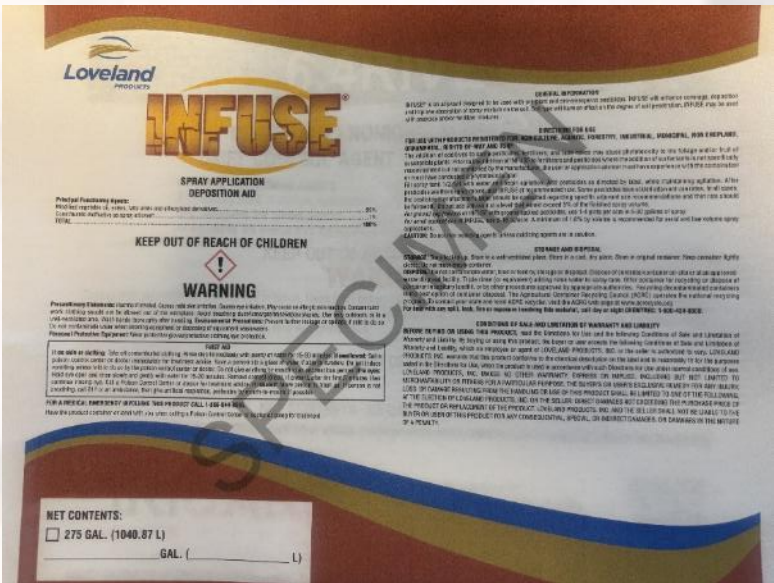
# Palmer Amaranth Height 8 Days After Tillage







# Deposition Aids for Herbicides?







Sonalan 3EC @ 32 oz/A + Valor EZ 4SC @ 3 z/A + Strongarm 84WG @ 0.225 oz/A  
- Applied PRE then Cadre 2AS @ 3 oz/A + Cobra 2EC @ 12.5 oz/A + Butyrac 2SL  
@ 16 oz/A + Dual Magnum 7.62EC @ 16 oz/A Applied POST (38 DAP)  
(with or without adjuvants)



NTC



No Adjuvant



+ Grounded  
@ 16 oz/A



+ 6.4Rivet  
@ 16 oz/A



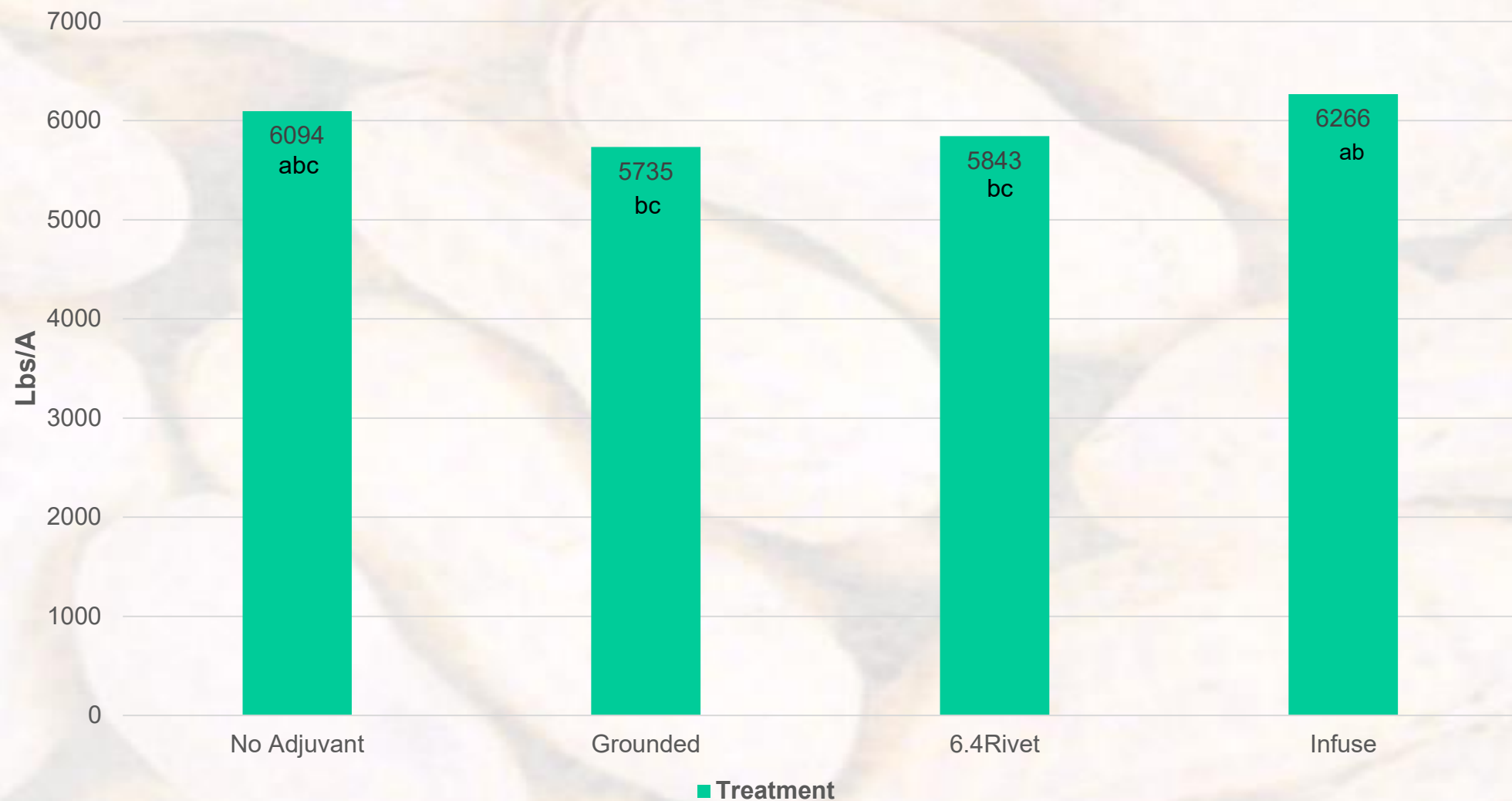
+ Infuse  
@ 16 oz/A

PE-04-25  
July 10  
67 DAP





Sonalan 3EC @ 32 oz/A + Valor EZ 4SC @ 3 z/A + Strongarm 84WG @ 0.225 oz/A  
- Applied PRE then Cadre 2AS @ 3 oz/A + Cobra 2EC @ 12.5 oz/A + Butyrac 2SL  
@ 16 oz/A + Dual Magnum 7.62EC @ 16 oz/A Applied POST (38 DAP)  
(with or without adjuvants)



LSD 0.10 = 549  
CV = 8.41



# 2025 DRA/Peanut Study



## DRIFT RETARDANT AND DEPOSITION AID

For use with most water soluble and wettable powder pesticides, desiccants, and cotton defoliants when applied by aerial or standard ground application.

### PRINCIPAL FUNCTIONING AGENTS:

Polyvinyl Polymer (Polyacrylamide) .....	01.00%
CONSTITUENTS INEFFECTIVE AS SPRAY ADJUVANTS .....	99.00%
TOTAL .....	100.00%

All ingredients in this product are exempt from the requirements of a tolerance as specified under Title 40, Code of Federal Regulations 180.

**KEEP OUT OF REACH OF CHILDREN**

## WARNING

May be harmful if swallowed  
Causes eye irritation  
Causes mild skin irritation  
May be harmful if inhaled

WA Reg. No. 5905-13002

CA Reg. No. 5905-50110-AA

NET CONTENTS: □ 1 Gallons (3.785 Liters)

SN 040115/0716G

□ 2.5 Gallons (9.46 Liters)


□ 250 Gallons (946.25 Liters)

### MANUFACTURED FOR

HELENA CHEMICAL COMPANY  
225 SCHILLING BOULEVARD, SUITE 300  
COLLIERVILLE, TN 38017  
901-761-0050

### PRECAUTIONARY STATEMENTS


HAZARDS TO HUMANS AND DOMESTIC ANIMALS



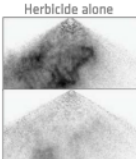
## InterLock®

By WINFIELD UNITED

### Adjuvant



Drift Reduction



Consistent droplet size achieved with addition of InterLock®

#### ALL-PURPOSE DRIFT AND DEPOSITION ADJUVANT

**Exclusive, patented deposition and drift-reduction adjuvant**

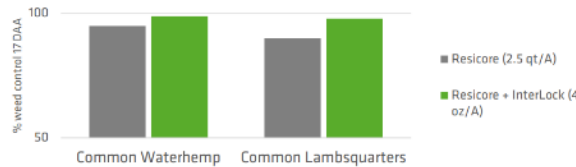
Protected by 3 U.S. patents and containing technology exclusive to WinField United, InterLock® is a crop-based adjuvant that improves spray deposition on intended targets and reduces spray drift. InterLock® works effectively with herbicides, fungicides, insecticides, desiccants and defoliants.

InterLock® reduces the number of fine particles in the spray pattern without thickening the spray. By keeping more spray droplets within the most effective size range, InterLock® helps improve coverage, increase canopy penetration, and reduce drift and evaporation of pesticides, whether they are applied by ground or air.

#### Features & Benefits

- **Reduces fines:** Delivering with more droplets in the ideal droplet diameter spectrum
- **Improves deposition and coverage:** Right sized droplet for greater leaf coverage
- **Increases canopy depth:** Helps get active ingredient deeper into plant canopy for better efficacy

#### InterLock® can help improve weed control up to 7%\*



Weed	Resicore (2.5 qt/A)	Resicore + InterLock (4 oz/A)
Common Waterhemp	~85%	~90%
Common Lambsquarters	~85%	~95%


#### Use Rate

General Uses:


- 5 to 25 gpa: 4 to 6 ounces per acre
- 25 to 50 gpa: 8 to 10 ounces per acre
- >50 gpa: 10 ounces per acre

Aquatic use: 4 to 6 ounces per acre

Deposition aid for fungicides and insecticides: 2 to 4 ounces per acre



U.S. Patent Protected



For more information visit [winfieldunited.com](http://winfieldunited.com)

\*Source: Internal field research conducted in 2016 by WinField United. Always read and follow label directions. InterLock® and WinField® are registered trademarks of WinField United. Actual results may vary. U.S. Pat. Nos. 10,334,842; 10,334,843 & 11,234,377. ©2022 WinField United.

# Reign®



## DEPOSITION AID DRIFT CONTROL AGENT

### Principal Functioning Agents:

Polyvinyl polymer (polyacrylamide) .....	1%
Constituents Ineffective as Spray Adjuvants .....	99%
<b>TOTAL .....</b>	<b>100%</b>

CA Reg. No. 34704-50045; WA Reg. No. 34704-05010

**KEEP OUT OF REACH OF CHILDREN**



## WARNING

**Precautionary Statements:** Causes eye irritation. Causes mild skin irritation. May be harmful if swallowed. Wear eye protection/face protection. Wash hands, face, and other affected areas thoroughly after handling. **Environmental Precautions:** Prevent further leakage or spillage if safe to do so. Do not contaminate water. Do not allow to enter drains, sewers, or watercourses.

**NET CONTENTS: 2.5 GAL. (9.46 L)**



Loveland  
PRODUCTS

Loveland Products, Inc. • PO Box 1286 • Greeley, CO 80632-1286

G0814



0 21077 47337 5



# DRA/Peanut Study - 2025

Prowl H<sub>2</sub>O @ 32 oz/A  
Valor EZ @ 3 oz/A  
Strongarm @ 0.225 oz/A

## PRE

Cadre @ 4 oz/A  
Cobra @ 12.5 oz/A  
Butyrac @ 16 oz/A  
Dual Magnum @ 16 oz/A

## POST (37 DAP)



NTC



No DRA



Clasp @ 32 oz/100 gals

PE-03-25  
July 10  
66 DAP



# DRA/Peanut Study - 2025



Gramoxone @ 8 oz/A  
Ultra Blazer @ 16 oz/A  
Basagran @ 6.4 oz/A  
Dual Magnum @ 16 oz/A  
**EPOST (14 DAP)**  
Cadre @ 4 oz/A  
Cobra @ 12.5 oz/A  
Butyrac @ 16 oz/A  
Dual Magnum @ 16 oz/A  
**POST (37 DAP)**



NTC



No DRA



Clasp @ 32 oz/100 gals

PE-03-25  
July 10  
66 DAP



# DRA/Peanut Study - 2025

Prowl H<sub>2</sub>O @ 32 oz/A  
Valor EZ @ 3 oz/A  
Strongarm @ 0.225 oz/A

## PRE

Cadre @ 4 oz/A  
Cobra @ 12.5 oz/A  
Butyrac @ 16 oz/A  
Dual Magnum @ 16 oz/A

## POST (37 DAP)



NTC



No DRA



InterLock @ 4 oz/A

PE-03-25  
July 10  
66 DAP



# DRA/Peanut Study - 2025

Gramoxone @ 8 oz/A  
Ultra Blazer @ 16 oz/A  
Basagran @ 6.4 oz/A  
Dual Magnum @ 16 oz/A  
**EPOST (14 DAP)**  
Cadre @ 4 oz/A  
Cobra @ 12.5 oz/A  
Butyrac @ 16 oz/A  
Dual Magnum @ 16 oz/A  
**POST (37 DAP)**



NTC



No DRA




InterLock @ 4 oz/A

PE-03-25  
July 10  
66 DAP



# DRA/Peanut Study - 2025



Prowl H<sub>2</sub>O @ 32 oz/A  
Valor EZ @ 3 oz/A  
Strongarm @ 0.225 oz/A

## PRE

Cadre @ 4 oz/A  
Cobra @ 12.5 oz/A  
Butyrac @ 16 oz/A  
Dual Magnum @ 16 oz/A

## POST (37 DAP)



NTC



No DRA



Reign @ 32 oz/100 gals

PE-03-25  
July 10  
66 DAP



# DRA/Peanut Study - 2025



Gramoxone @ 8 oz/A  
Ultra Blazer @ 16 oz/A  
Basagran @ 6.4 oz/A  
Dual Magnum @ 16 oz/A  
**EPOST (14 DAP)**  
Cadre @ 4 oz/A  
Cobra @ 12.5 oz/A  
Butyrac @ 16 oz/A  
Dual Magnum @ 16 oz/A  
**POST (37 DAP)**



NTC



No DRA



Reign @ 32 oz/100 gals

PE-03-25  
July 10  
66 DAP

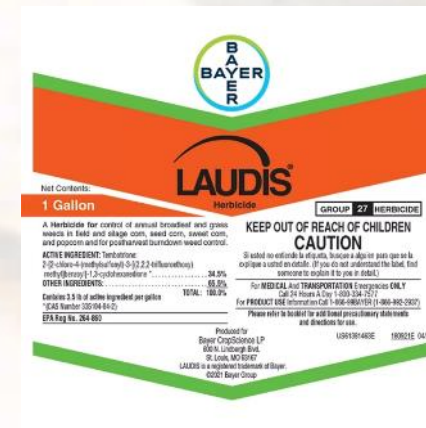


# 2025 HPPD/Peanut Rotation Study

- Current Rotation Restrictions for Peanuts
  - *Callisto (mesotrione)* = 10 months
  - *Impact (topramezone)* = 9 Months
  - *Laudis (tembotrione)* = 11 months
  - *Shieldex (tolpyralate)* = 9 months



**IMPACT**  
Herbicide







# 2025 HPPD/Peanut Rotation Study

*HPPD Applied 57 DBP*



NTC



Laudis 3.5SC @ 6 oz/A

PE-08B-25  
July 10  
57 DAP





# 2025 HPPD/Peanut Rotation Study

*HPPD Applied 57 DBP*



NTC



Impact 2.8SC @ 1.5 oz/A

PE-08B-25  
July 10  
57 DAP





# 2025 HPPD/Peanut Rotation Study

*HPPD Applied 57 DBP*



NTC



Callisto 4SC @ 6 oz/A

PE-08B-25  
July 10  
57 DAP





# 2025 HPPD/Peanut Rotation Study

*HPPD Applied 57 DBP*



NTC



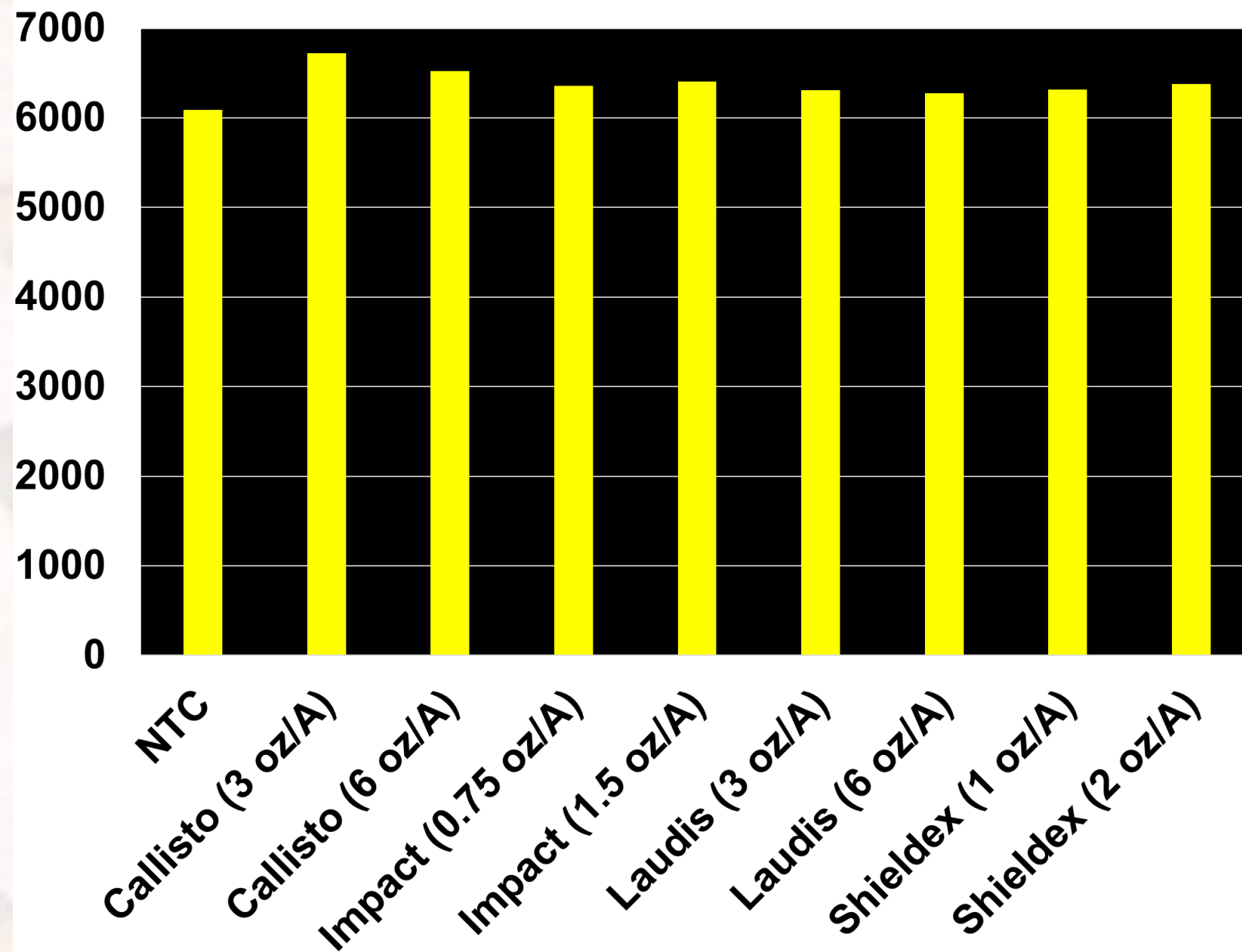
Shieldex 3.33SC @ 2 oz/A

PE-08B-25  
July 10  
57 DAP





Figure 3. Peanut Yield (lbs/A)



P=0.3123  
CV= 5.44  
TifNV-HG



# Problems - 2025





# Beware of Google/AI Recommendations!

What's New

atrazine and peanuts - Google

< > ↺

google.com/search?q=atrazine+and+peanuts&rlz=1C1GCEA\_enUS1148US1163&oq=atrazine+and+peanuts&gs\_lcrp=EgZjaHJvbWUyBggAEEUYOTIHCAEQIRigATIHCAIQIRigATIHCAMQIRigATI...

☆ 📄 ⓘ ⋮

Google

atrazine and peanuts

X 🔊 🖼️ 🔍


🔗 ⋮ 👤 E

All Images Shopping Short videos Videos Forums News More ▾ Tools ▾

◆ AI Overview

Learn more ⋮

Atrazine is a herbicide used in peanut cultivation, often applied pre-emerge or early post-emerge to control weeds. While peanuts are generally considered tolerant to atrazine, symptoms like root deformation or curling can be observed under certain conditions, particularly when peanuts emerge in cool, wet soils. Atrazine can also cause leaf burning, but this is usually due to the herbicide formulation's solvents and doesn't typically impact growth.



Here's a more detailed look:

Use in Peanut Cultivation:

- Atrazine is commonly used in peanut fields to manage weeds, both pre-emerge (before the peanuts sprout) and early post-emerge (after the peanuts emerge).
- It helps control a range of annual grasses and broadleaf weeds, which can compete with peanuts for resources and reduce yields.
- Atrazine is part of various herbicide programs for peanuts, often in combination with other herbicides to provide a broader spectrum of weed control.

Peanut Tolerance and Potential Symptoms:

- Peanuts are generally considered tolerant to atrazine.

SS-AGR-327/AG337: Diagnosing Herbicide Injury in Peanut  
Feb 5, 2024 — Symptoms: Peanut is generally tolerant to these herbicides, but injury can be...  
[UF/IFAS EDIS](#)


Efficient removal of atrazine in wastewater by washed peanut ...  
Apr 8, 2025 — ATR belongs to the triazine class of organic compounds, which is mainly suitabl...  
[ScienceDirect.com](#)


Volunteer Peanut Control in Field Corn | Ben Hill County Ag  
Apr 25, 2019 — Remember that the volunteer peanuts that emerge from seeds that made it thru the winter and rains are...  
[UGA](#)

Show all

News for you  
Donald Trump to...

Search





1:21 PM  
5/31/2025





# Peanut and Atrazine – 2025

## Atrazine @ ~65 DAP

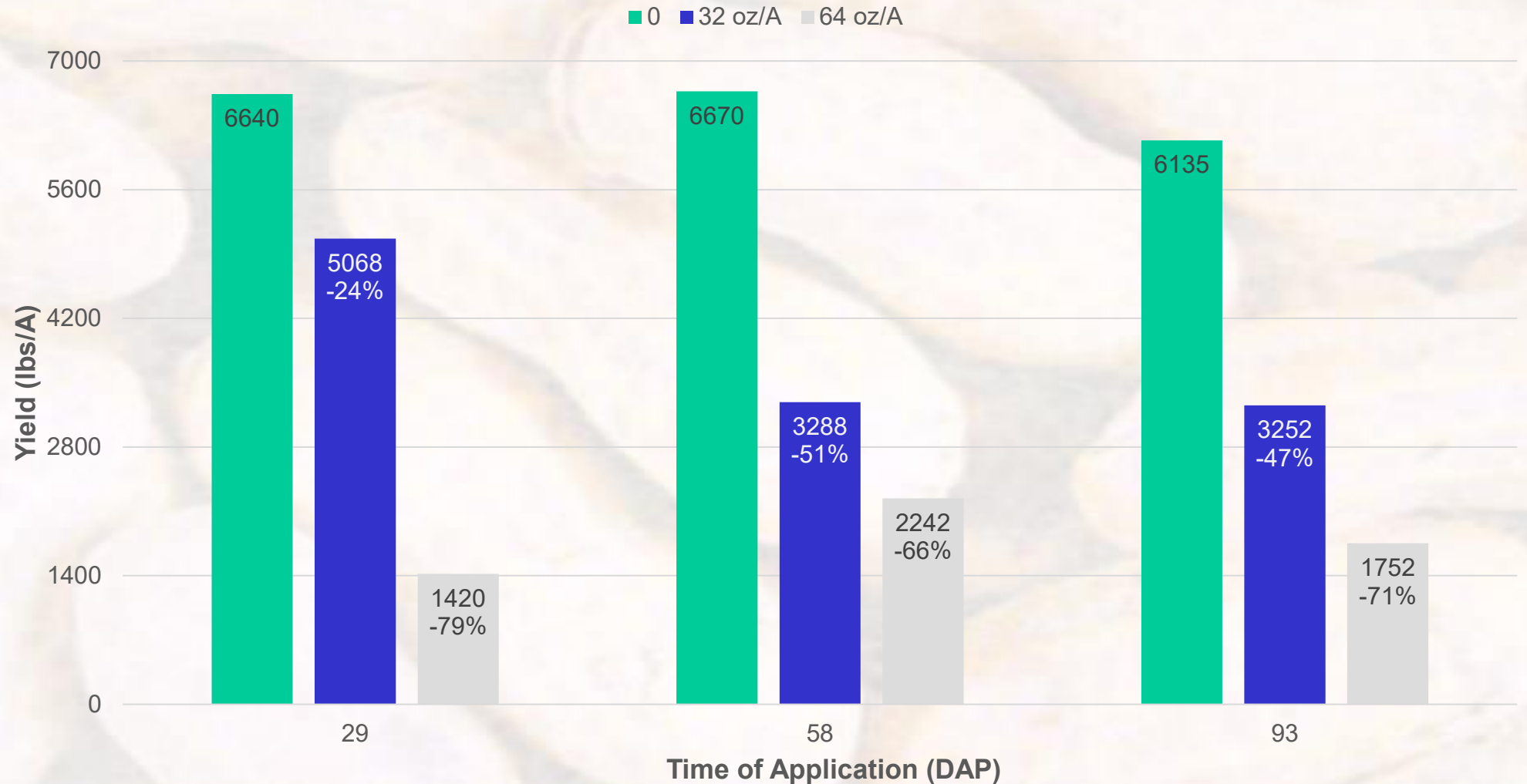


B. Hayes  
August 18  
~5-7 DAT





# Peanut Yield Response to Aatrex 4L (atrazine)







# Liberty Drift on Peanut From Drone



- Corn sprayed 08/13/25
- Sample collected 08/21/25



**Waters Agricultural Laboratories, Inc**

*"Improving Growth...  
With Science"*

257 Newton Hwy | Camilla, GA 31730- | Phone (229) 336-7216

UGA - Eric Prostko

Grower: **WILL GRANTHAM**

Sample Date:

104 Research Way  
Tifton, GA 31793

Commodity:

Received Date: **8/21/2025**

Report: **GA25-5829PH-1**

Report Date: **8/22/2025**

Sample Number:  
**06-G 90 Days**

Sample Description:  
**Plant Tissue**

Lab Number:  
**5829PH**

## Individual Compounds

Method	Analyte	Concentration	MDL	Units	Analyst
QuPPe-Method	Glufosinate	0.11	0.050	ppm	JA



## Peanut Response to Liberty®

Dr. Eric Prostko, Ph.D., Professor and Extension Weed Specialist  
Herbicide Use, Application, and Resistance Management  
University of Georgia

### Introduction

Liberty® (glufosinate-ammonium) has become a popular pre-emergence herbicide in Georgia due to its ability to control both broadleaf and grass weeds. However, it is not a selective herbicide. In 2015, many of the peanut growers in Georgia were affected by a problem called "Liberty® injury". The symptoms of this "Liberty® injury" include yellowing, wilting, and death of the plants. This is an important potential for off-target movement and crop contamination of Liberty® to sensitive crops such as peanut (Figure 1-3).

### Liberty®/Peanut Symptomatology

When evaluating peanut fields for signs of herbicide injury, it is important to identify any other potential causes such as drought, soil pH, nutrient deficiencies, nematodes, and plant diseases. These types of problems often mimic herbicide injury symptoms. Examples of Liberty® injury symptoms on peanut plants are presented in Figures 1-6.



Figure 1. Peanut plants showing symptoms of Liberty® injury.



Figure 2. Peanut plants showing symptoms of Liberty® injury.



Figure 3. Peanut plants showing symptoms of Liberty® injury.



Figure 4. Peanut plants showing symptoms of Liberty® injury.

Figure 5. Peanut plants showing symptoms of Liberty® injury.

Figure 6. Peanut plants showing symptoms of Liberty® injury.





# Dicamba Injury on Peanut - 2025



- Dicamba Applied: April 5
- Peanut Planted: April 29
  - 24 days after applicaton
- No rain from application until 0.6" day after planting.
- Only 25% peanut emergence
- **Dicamba is not labeled for preplant use in peanut!**
- If it was (**but never will be**):
  - 0.50 lb ae/A = 28 days + 1" irrigation/rainfall
  - 0.25 lb ae/A = 14 days + 1" irrigation/rainfall





# Peanut Injury?

## Roundup or Atrazine or K Deficiency or B Toxicity?

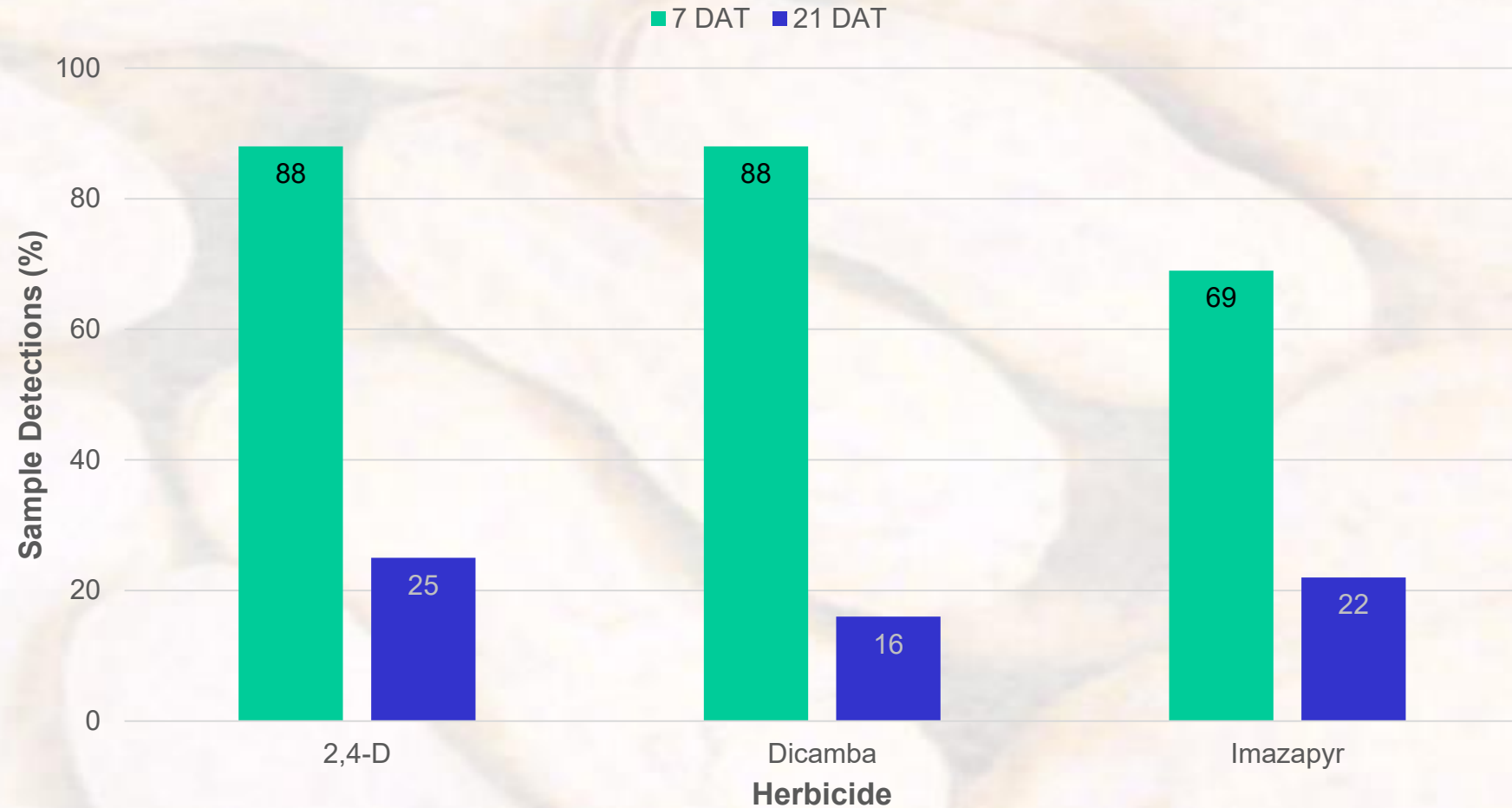


- Roundup and Atrazine tests were negative?
  - *Sampled too late???*
- Potassium (K) in leaf tissue was 3.85%
  - *sufficiency range = 1.70-3.00%*
- Boron (B) was very high in leaf tissue analysis (174 ppm)
  - *sufficiency range = 20-60 ppm*
  - *B toxicity in peanut tissue is likely when B concentration exceeds 100 ppm.*
  - *Grower applied 1 qt/A of B (10%) in 2<sup>nd</sup> and 4<sup>th</sup> fungicide sprays.*





# Herbicide Residues Detected in Cotton Tissue Samples as Influenced by Time After Application\*



\*Source: Wright-Smith HE, Culpepper AS, Crabtree CR, Grey TL, Randell-Singleton TM, Vance JC (2024) Herbicide residue detection in cotton as influenced by time, drift rate, and sampling method. *Weed Sci.* 72: 798–803.



# Trifloxysulfuron Injury Peanut - 2025



- Recognition 20.4WDG @ 1.95 oz/A applied in April?
  - 0.0249 lb ai/A
  - 2.1X to 5.3X of cotton rate
- Peanuts Planted in May?
- Same ai as Envoke in cotton
  - Envoke 75WDG
    - 0.10-0.25 oz/A
    - 0.0047-0.0117 lb ai/A
    - 7 month peanut plant-back restriction
- 0.003 and 0.007 ai/A PRE reduced peanut yields 7.5% and 12.6%.
  - Porterfield and Wilcut (2003). *Weed Technology* 17(3):41-445.





# What do the top Georgia peanut growers do?

## *2024 Georgia Peanut Achievement Club Winners*

- 16 growers
  - 116 to 1520 acres (range)
- **5360 lb/A average yield**
  - 4145-6089 lbs/A (range)
  - 2024 GA State Avg. = 3800 lbs/A
- 100% - irrigated
- 79% - conventional tillage
- 71% - twin rows
- **Top 5 Herbicides**
  - 100%: flumioxazin
  - 100%: s-metolachlor/metolachlor
  - 79%: 2,4-DB
  - 71%: diclosulam
  - 64%: imazapic





Questions/Comments/Thanks for Listening!

